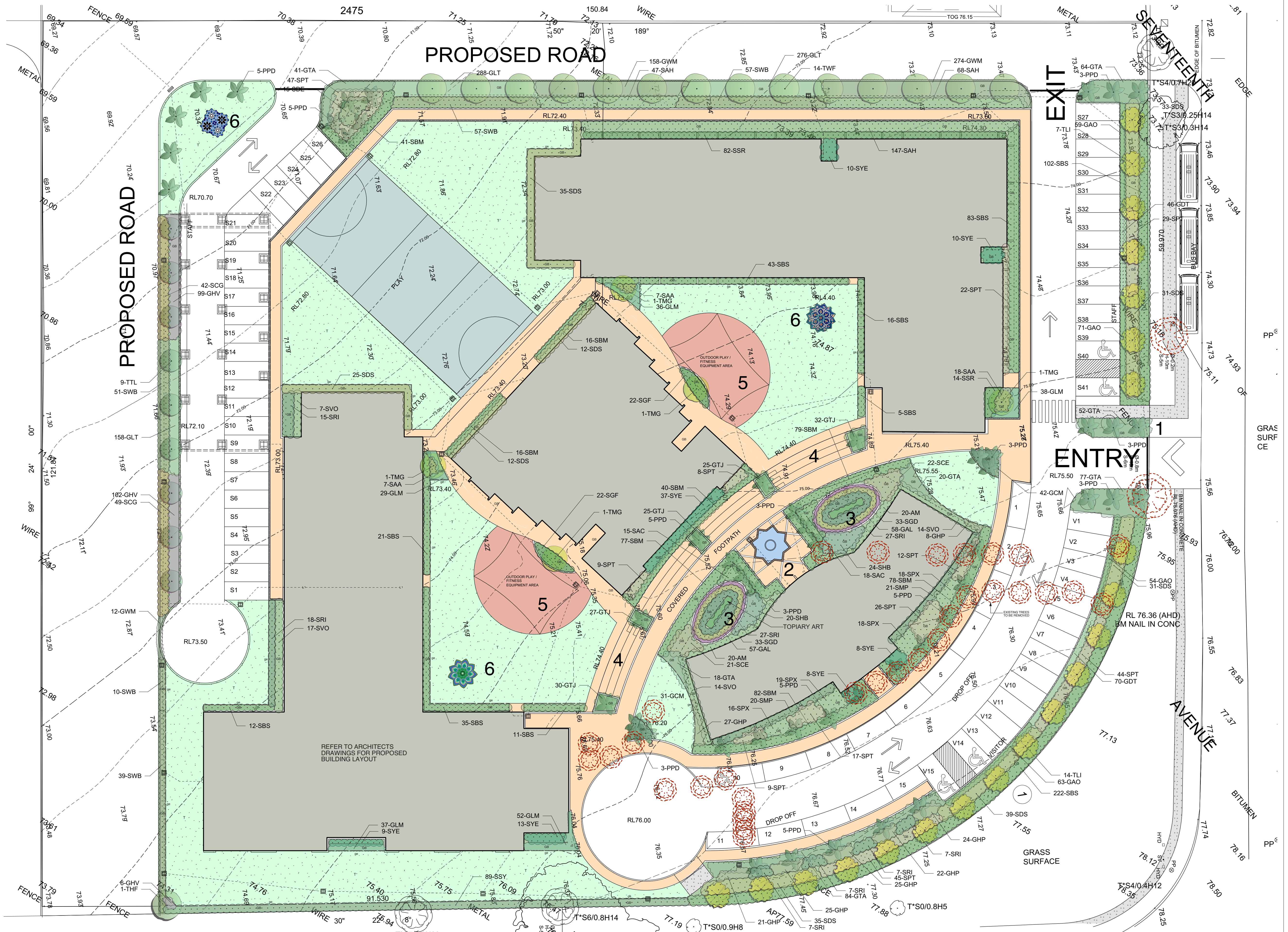


- LEGEND**
- Existing trees to be retained
 - Existing trees to be removed
 - Proposed tree plantings
 - Proposed shrub plantings
 - Proposed groundcover plantings
 - Stencil / brick pavement
 - Concrete path pavement
 - Proposed garden bed
 - Proposed turf area
 - Timber garden edge

Notes:

- Refer Architects drawings for pavement, walls, fence, steps, and levels
- Refer Engineers drawings for hydraulic information
- Refer L.06 for Plant Schedule, landscape details and specification

- KEY**
- Site vehicular entry with avenue date palm plantings
 - Raised water feature with central fountain with feature pavement surrounds
 - Feature / sculptural vertical hedge plantings
 - Terrace sitting steps
 - Outdoor fitness play area with TPV softfall surfacing
 - Artwork pavement in grass



GENERAL NOTES:

- Do not scale of drawings. Follow written dimensions. If in doubt obtain written advice from the Superintendent.
- Verify all dimensions on site.
- Refer to legend for all symbol and code keys.
- Read in conjunction with the specifications
- Read in conjunction with all associated drawings

A	FOR APPROVAL	CL	05.04.16	CL
ISSUE	AMENDMENT	DRAWN	DATE	CL

DESIGNED:	PREPARED FOR:
GD	AL MABARAT BENEVOLENT SOCIETY LTD
DRAWN:	
CL	

LANDSCAPE ARCHITECTS:

GREENLAND DESIGN Pty Ltd
ABN 73 139 152 855
Landscape Architect
C. Ly | AILA
Mob.: 0403 164 198

PROJECT:

PROPOSED ARRACHMAN COLLEGE

PROJECT ADDRESS:

LOT 95-105, 17TH AVENUE AUSTRAL

DRAWING TITLE:

Landscape Plan

0 5 10 M

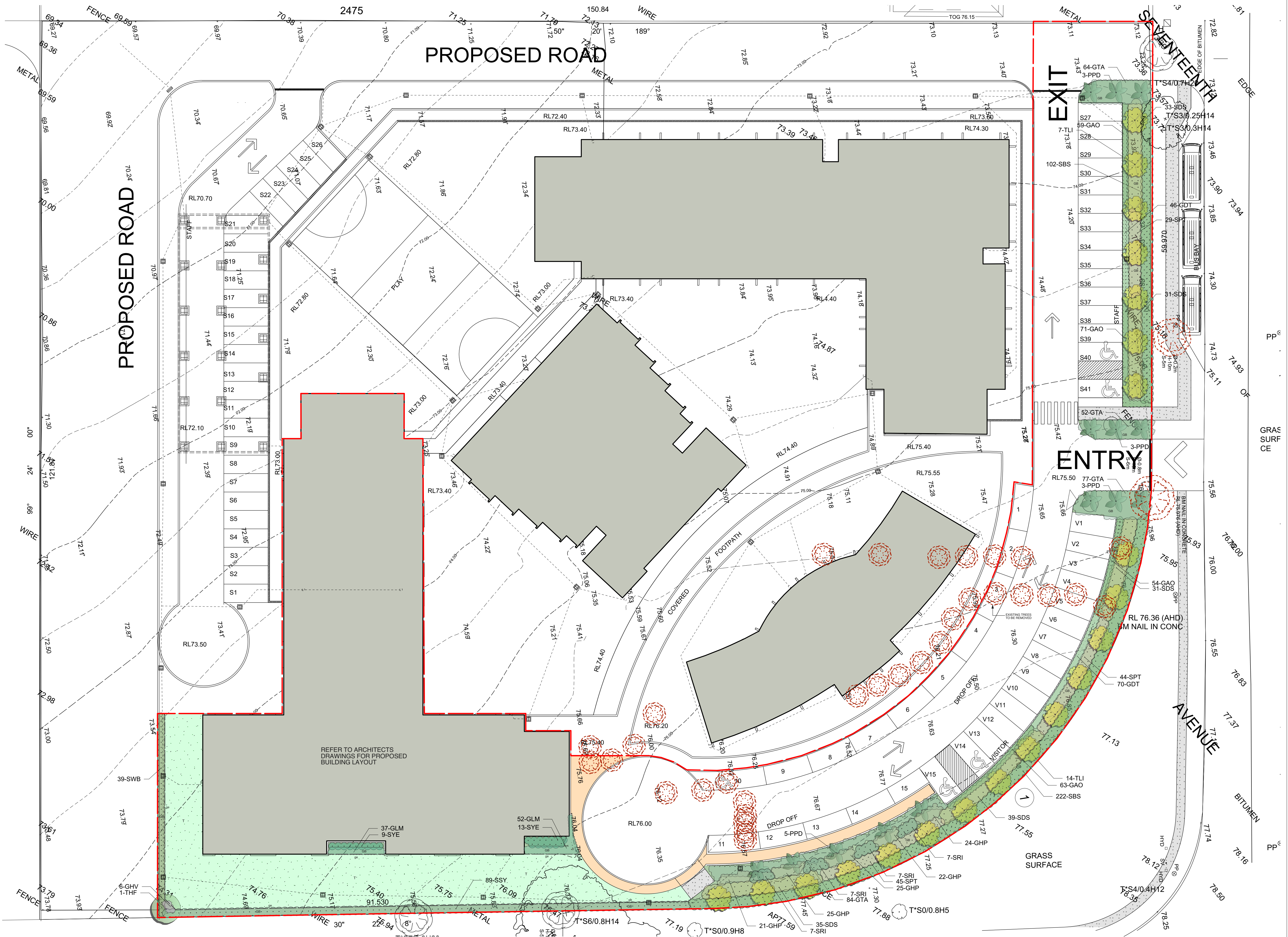


DATE:	APRIL 2016
SCALE: 1:500	ISSUE: A
FULL SIZE: A1	
DRAWING NO:	1330.L.01

- LEGEND**
- Existing trees to be retained
 - Existing trees to be removed
 - Proposed tree plantings
 - Proposed shrub plantings
 - Proposed groundcover plantings
 - Stencil / brick pavement
 - Concrete path pavement
 - GB Proposed garden bed
 - T Proposed turfed area
 - ge Timber garden edge

Notes:

- Refer Architects drawings for pavement, walls, fence, steps, and levels
- Refer Engineers drawings for hydraulic information
- Refer L.06 for Plant Schedule, landscape details and specification



GENERAL NOTES:

- Do not scale of drawings. Follow written dimensions. If in doubt obtain written advice from the Superintendent.
- Verify all dimensions on site.
- Refer to legend for all symbol and code keys.
- Read in conjunction with the specifications
- Read in conjunction with all associated drawings

A	FOR APPROVAL	CL	05.04.16	CL
ISSUE	AMENDMENT	DRAWN	DATE	

DESIGNED:	PREPARED FOR:
GD	AL MABARAT BENEVOLENT SOCIETY LTD
DRAWN:	
CL	

LANDSCAPE ARCHITECTS:

GREENLAND DESIGN Pty Ltd
ABN 73 139 152 855
Landscape Architect C. Ly I AILA
Mob.: 0403 164 198

PROJECT:

PROPOSED ARRAHMAN COLLEGE

PROJECT ADDRESS:

LOT 95-105, 17TH AVENUE AUSTRAL

DRAWING TITLE:

Landscape Plan - Stage 1

0 5 10 M



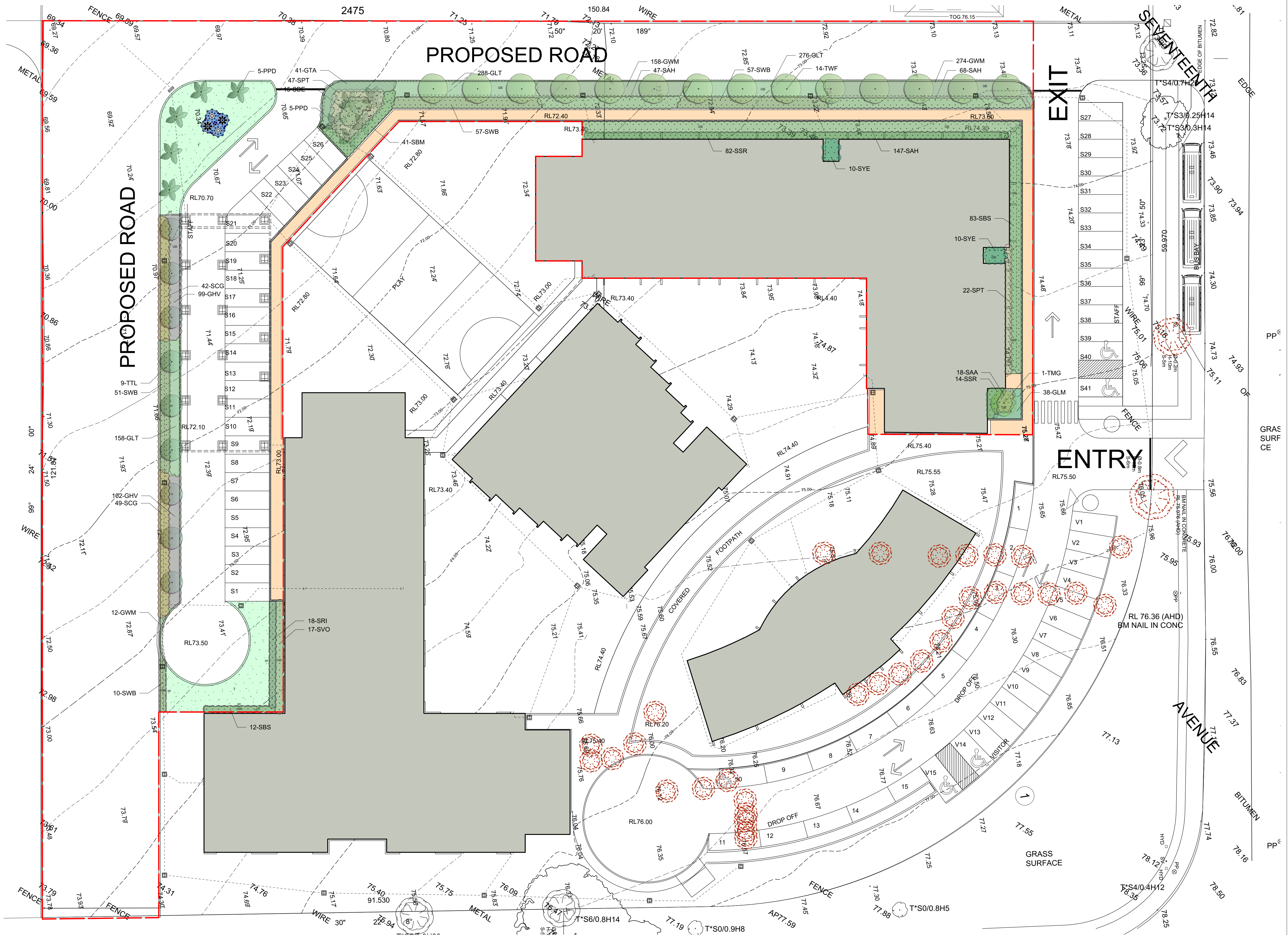
DATE:	APRIL 2016
SCALE: 1:500	ISSUE: A
FULL SIZE: A1	
DRAWING NO:	1330.L.02

LEGEND

- Existing trees to be retained
- Existing trees to be removed
- Proposed tree plantings
- Proposed shrub plantings
- Proposed groundcover plantings
- Stencil / brick pavement
- Concrete path pavement
- Proposed garden bed
- Proposed turfed area
- Timber garden edge

Notes:

- Refer Architects drawings for pavement, walls, fence, steps, and levels
- Refer Engineers drawings for hydraulic information
- Refer L.06 for Plant Schedule, landscape details and specification



GENERAL NOTES:

- Do not scale of drawings. Follow written dimensions. If in doubt obtain written advice from the Superintendent.
- Verify all dimensions on site.
- Refer to legend for all symbol and code keys.
- Read in conjunction with the specifications
- Read in conjunction with all associated drawings

A	FOR APPROVAL	CL	05.04.16
ISSUE	AMENDMENT	DRAWN	DATE

DESIGNED:	PREPARED FOR:
GD	AL MABARAT BENEVOLENT SOCIETY LTD
DRAWN:	
CL	

LANDSCAPE ARCHITECTS:

GREENLAND DESIGN Pty Ltd
ABN 73 139 152 855
Landscape Architect C. Ly I AILA
Mob.: 0403 164 198

PROJECT:

PROPOSED ARRAHMAN COLLEGE

PROJECT ADDRESS:

LOT 95-105, 17TH AVENUE AUSTRAL

DRAWING TITLE:

Landscape Plan - Stage 2

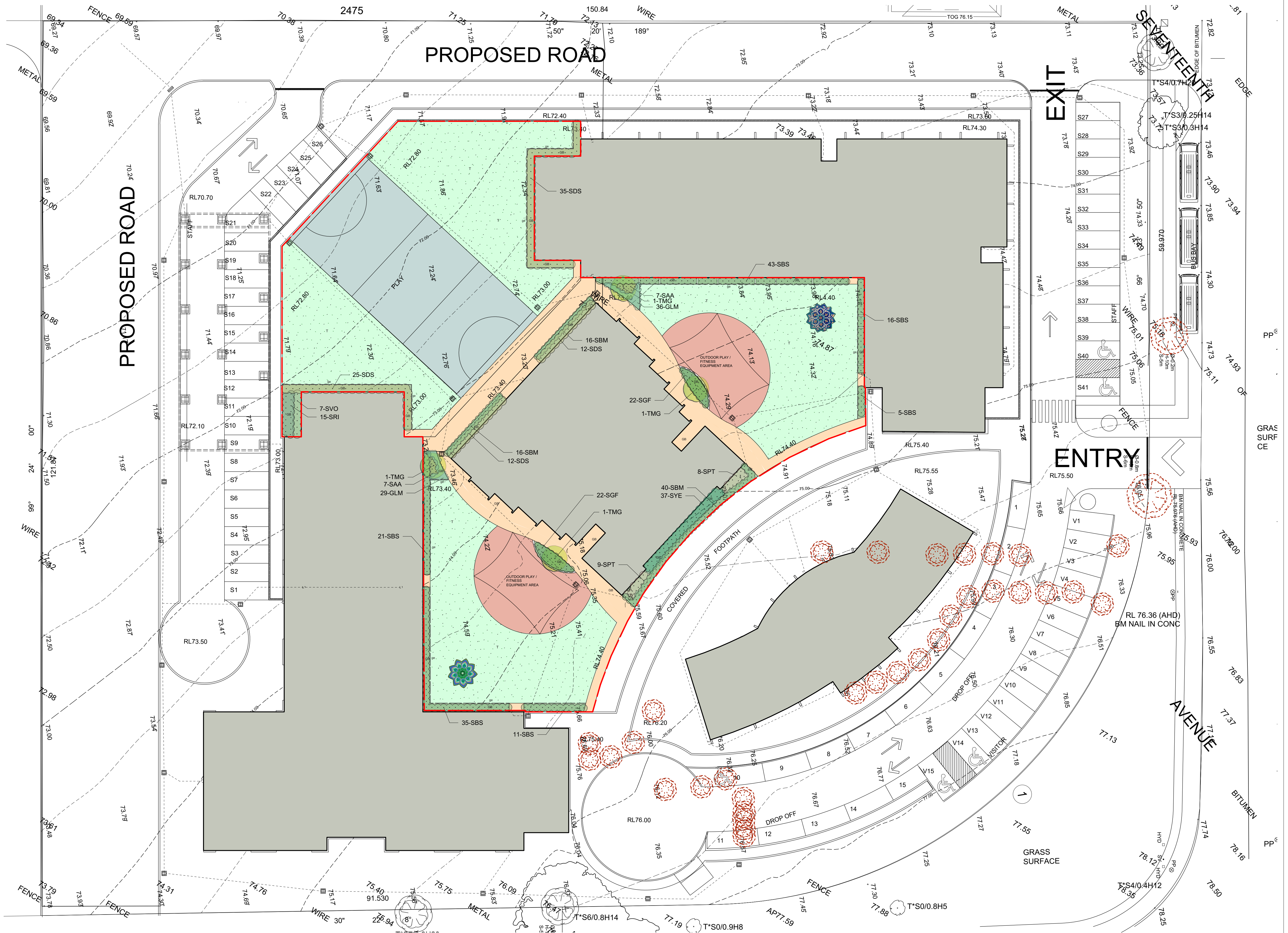
DATE:	APRIL 2016
SCALE: 1:500	ISSUE: A
FULL SIZE: A1	
DRAWING NO:	1330.L.03



- LEGEND**
- Existing trees to be retained
 - Existing trees to be removed
 - Proposed tree plantings
 - Proposed shrub plantings
 - Proposed groundcover plantings
 - Stencil / brick pavement
 - Concrete path pavement
 - GB Proposed garden bed
 - T Proposed turfed area
 - ge Timber garden edge

Notes:

- Refer Architects drawings for pavement, walls, fence, steps, and levels
- Refer Engineers drawings for hydraulic information
- Refer L.06 for Plant Schedule, landscape details and specification



GENERAL NOTES:

- Do not scale of drawings. Follow written dimensions. If in doubt obtain written advice from the Superintendent.
- Verify all dimensions on site.
- Refer to legend for all symbol and code keys.
- Read in conjunction with the specifications
- Read in conjunction with all associated drawings

A	FOR APPROVAL	CL	05.04.16	CL
ISSUE	AMENDMENT	DRAWN	DATE	

DESIGNED:	PREPARED FOR:
GD	AL MABARAT BENEVOLENT SOCIETY LTD
DRAWN:	
CL	

LANDSCAPE ARCHITECTS:

GREENLAND DESIGN Pty Ltd
ABN 73 139 152 855
Landscape Architect C. Ly I AILA
Mob.: 0403 164 198

PROJECT:

PROPOSED ARRAHMAN COLLEGE

PROJECT ADDRESS:

LOT 95-105, 17TH AVENUE AUSTRAL

DRAWING TITLE:

Landscape Plan - Stage 3

0 5 10 M

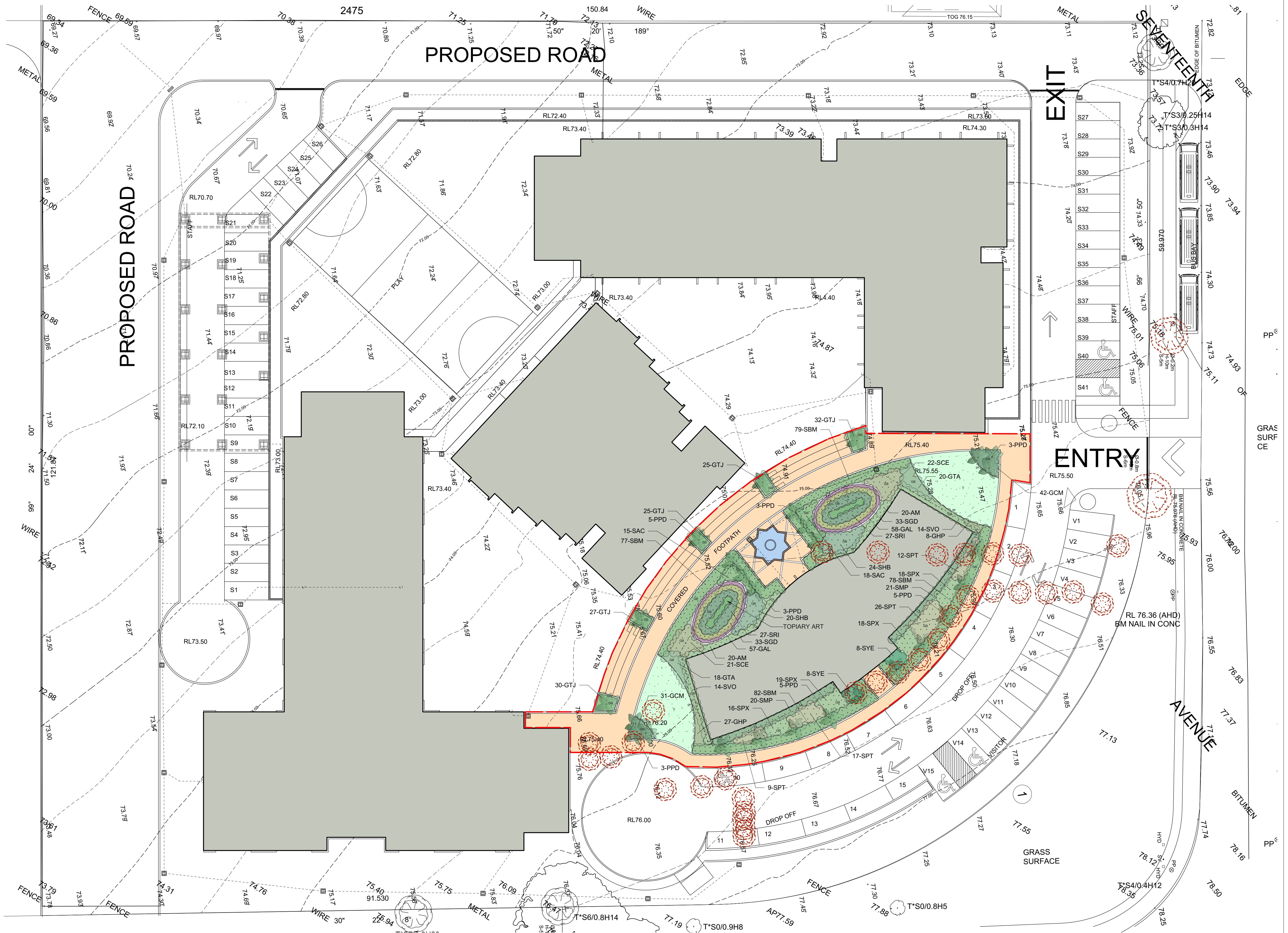


DATE:	APRIL 2016
SCALE: 1:500	ISSUE: A
FULL SIZE: A1	
DRAWING NO:	1330.L.04

- LEGEND**
- Existing trees to be retained
 - Existing trees to be removed
 - Proposed tree plantings
 - Proposed shrub plantings
 - Proposed groundcover plantings
 - Stencil / brick pavement
 - Concrete path pavement
 - GB Proposed garden bed
 - T Proposed turfed area
 - ge Timber garden edge

Notes:

- Refer Architects drawings for pavement, walls, fence, steps, and levels
- Refer Engineers drawings for hydraulic information
- Refer L.06 for Plant Schedule, landscape details and specification



GENERAL NOTES:

- Do not scale of drawings. Follow written dimensions. If in doubt obtain written advice from the Superintendent.
- Verify all dimensions on site.
- Refer to legend for all symbol and code keys.
- Read in conjunction with the specifications
- Read in conjunction with all associated drawings

A	FOR APPROVAL	CL	05.04.16
ISSUE	AMENDMENT	DRAWN	DATE

DESIGNED:	PREPARED FOR:
GD	AL MABARAT BENEVOLENT SOCIETY LTD
DRAWN:	
CL	

LANDSCAPE ARCHITECTS:

GREENLAND DESIGN Pty Ltd
ABN 73 139 152 855
Landscape Architect C. Ly I AILA
Mob.: 0403 164 198

PROJECT:

PROPOSED ARRACHMAN COLLEGE

PROJECT ADDRESS:

LOT 95-105, 17TH AVENUE AUSTRAL

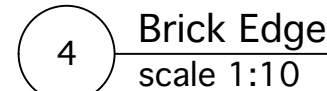
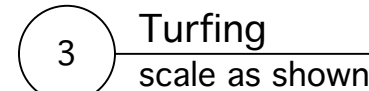
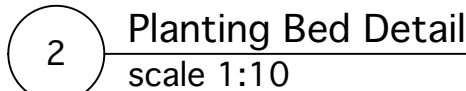
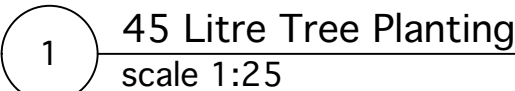
DRAWING TITLE:

Landscape Plan - Stage 4

0 5 10 M



DATE:	APRIL 2016
SCALE: 1:500	ISSUE: A
FULL SIZE: A1	
DRAWING NO:	1330.L.05



Plant Schedule - Stages 1 to 4							
ID	Qty	Common Name	Botanical Name	Size	Mature Height	Mature Spread	Native (N)
Trees							
PPD	51	Date Palm	Phoenix dactylifera	2.0 m trunk	15 - 20m	10 - 15m	
THF	1	Native Frangipani	Hymenosporum flavum	45Litre	8 - 12m	3.0 - 4m	N
TL	21	Crepe Myrtle	Lagerstroemia indica 'Natchez'	45Litre	6 - 8m	3.5 - 6m	
TMG	5	Little Gem Southern Magnolia	Magnolia grandiflora 'Little Gem'	45Litre	4 - 6m	2.0 - 3.5m	
TTL	9	Water Gum	Tristanopsis laurina 'Luscious'	45Litre	6 - 8m	3.5 - 6m	N
TWF	14	Weeping Lilly Pilly	Waterhousia floribunda	45Litre	6 - 8m	3.5 - 6m	N
Shrubs							
AM	40	Alba Magna	Azalea 'Alba Magna'	200mm	1.0 - 1.5m	1.0 - 1.5m	
SAA	32	Century Plant	Agave attenuata	200mm	0.75 - 0.9m	0.6 - 0.9m	
SAC	33	Green Mist	Acmena 'Ailyn Magic'	200mm	1.0 - 1.5m	0.8 - 1.0m	N
SAH	262	Dwarf Lilly Pilly	Acmena 'Hedge Master'	200mm	0.8 - 1.0m	0.8 - 1.0m	N
SBM	429	Japanese Box	Buxus microphylla var japonica	200mm	0.6 - 0.8m	0.8 - 1.0m	
SBS	550	Common Boxwood	Buxus sempervirens	200mm	1 - 1.5m	0.9 - 1.2m	
SCE	43	Evening Glow Mirror Plant	Coprosma 'Evening Glow'	200mm	0.9 - 1.5m	0.9 - 1.2m	N
SCG	91	Bottle Brush	Callistemon 'Great Balls of Fire'	200mm	1 - 1.2m	2.0 - 3.5m	N
SDE	15	Gymea Lily	Doryanthes excelsa	200mm	1.2 - 2m	1.2 - 2.0m	N
SDS	253	Duranta Gold	Duranta 'Sheenas Gold'	200mm	0.8 - 1.2m	0.9 - 1.2m	
SGD	66	Golden Diosma	Coleonema pulchellum aurea	200mm	0.6m hedge	0.9 - 1.2m	
SGF	44	Florida Gardenia	Gardenia augusta 'Florida'	200mm	0.8 - 1.0m	0.9 - 1.2m	
SHB	44	Veronica	Hebe 'Blue Gem'	200mm	0.9 - 1.5m	0.6 - 0.9m	
SMP	41	Orange Jessamine	Murraya paniculata	200mm	1.5 - 3m	3.5 - 6m	
SPT	268	New Zealand Flax	Phormium tenax 'Flamin'	200mm	0.6-0.9m	0.8 - 1.0m	
SPX	71	Philodendron	Philodendron xanadu	200mm	0.6 - 0.8m	0.7 - 1.0m	
SRI	115	Indian Hawthorn	Rhaphiolepis indica 'Oriental Pearl'	200mm	0.9 - 1.5m	1.2 - 2.0m	
SSR	96	Bird Of Paradise	Strelitzia reginae var juncea	200mm	0.9 - 1.5m	0.9 - 1.2m	
SSY	89	Cascade Lilly Pilly	Syzygium 'Cascade'	200mm	2 - 3m	1.2 - 2.0m	N
SVS	52	Dense Form Viburnum	Viburnum odoratissimum 'Dense Form'	200mm	3 - 4m	2 - 3m	
SWB	214	Blue Gem	Westringia 'Blue Gem'	200mm	0.8 - 1.0m	0.9 - 1.2m	N
SYE	95	Spineless Yucca	Yucca elephantipes	200mm	2.0 - 3.0m	0.8 - 1.2m	
Ground Covers							
GAL	115	Little Ruby	Alternanthera 'Little Ruby'	150mm	0.6 - 0.75m	1.0 - 1.5m	
GHP	152	Licorice Plant	Helichrysum petiolare 'LimeLight'	150mm	0.3 - 0.45m	0.6 - 0.9m	
GAO	247	Lily Of The Nile	Agapanthus orientalis 'Blue'	150mm	0.5 - 0.6m	0.3 - 0.6m	
GHV	207	False Sarsaparilla	Hardenbergia violacea "Meema"	150mm	0.75 - 0.9m	1.2 - 2.0m	N
GCM	73	Bush Lily	Clivia miniata	150mm	0.45 - 0.6m	0.3 - 0.6m	
GDT	116	Flax Lily	Dianella tasmanica 'Tasred'	150mm	0.6 - 0.7m	0.4 - 0.6m	
GLM	192	Giant Lily Turf	Liriope muscari 'Evergreen Giant'	150mm	0.0 - 0.3m	0.0 - 0.3m	
GLT	722	Spiny-headed mat rush	Lomandra longifolia 'Tanika'	150mm	0.45 - 0.6m	0.6 - 0.9m	N
GTA	356	Asian Jasmine	Trachelospermum asiaticum	150mm	n/a	3 - 5m	
GWM	444	Mundi	Westringia fruticosa 'Mundi'	150mm	0.45 - 0.6m	0.9 - 1.2m	N
GTJ	139	Star Jasmine	Trachelospermum jasminoides	150mm	0.3 - 0.6m	1 - 4m	

SPECIFICATION NOTES
PLANTING MATERIALS

Planting Mix:
Planting mix for tree pit backfill shall be "Organic Garden Mix" consisting of
50% Black Soil
20% Coarse Sand
30% Organic Material
as available from Australian Native Landscapes, Phone: [02] 9450 1444, or approved
equivalent. Samples shall be provided to the Superintendent prior to ordering or
delivery to site. Any material delivered to site, that is rejected by the Superintendent,
shall be removed by the contractor at his own expense. Minimum depths of mix to all
planting bed areas is as specified on details.

Mulch:

Mulch to garden bed:
Mulch shall mean hardwood mulch (25mm grade), free from material derived from Privet, Willow, Poplar, Coral trees, or other noxious weeds. Any mulch exceeding the 25mm grade shall be rejected / removed from the site. Graded hardwood mulch to be supplied by Australian Native Landscapes Pty Ltd Phone (02) 9450 1444, or approved equivalent.

Spread mulch so that after settling, it is:

- smooth and evenly graded between design surface levels;
- flush with adjacent finished levels;
- of the required depths (75mm); and
- sloped towards the base of plant stems in plantation beds, but not in contact with the stem (not closer than 50mm in the case of gravel mulches).

Place after the preparation of the planting bed, planting and all other work.

Plant Material:

All plant material must be true to the species. No substitutes will be allowed. All plants shall be free of fungus and insect damage. All plants shall be healthy, well shaped, not soft or force grown and not root bound.

Tured areas:

All new turfed areas are to be selected weed free Soft Leaf Buffalo. Turf shall be laid neatly butted with staggered joints, flush with adjacent surfaces and have even running falls to all drainage points.

All new turfed area shall have a minimum 150mm depth of weed free top soil, placed and levelled prior to turfing.

PREPARATION AND HARDWORKS

Excavating for Spot Planting

To planting areas, excavate a hole for each plant large enough to provide not less than twice the depth and twice the diameter than the root ball of species to be planted.

Staking

Use durable hardwood, straight, free from knots or twists, pointed at one end. Drive stakes into the ground a minimum one third of their length, avoiding damage to the root system.

- 45 Litre trees in 2 x 38x38x1800mm Hardwood Stake with double Nylon tie TIES: Provide a 50mm wide Nylon webbing tie per stake, fixed securely to the stakes, one tie at half the height of the main stem and the other as necessary to stabilise the plant.

Decorative Pebble

MATERIAL: Decorative pebble shall be Western White pebble, gravel to be of uniform size or graded material in the size 30 - 40mm grade to nominal 75mm thickness as available from Australian Native Landscapes. Ph: (02) 9450 1444.

Concrete Edge

INSTALLATION: Supply and install 150 x 100mm (width) reinforced flush concrete kerb to locations as approved on site by the Superintendent. Provide flexible joints at maximum 3 metre intervals in colour to match concrete. Lightly expose aggregate through rinsing / sponging. Tool finish exposed edges with 10mm pencil round to prevent chipping.

Brick Edge

MATERIALS: Shall be clay brick 230x110x75mm bricks or approved equivalent
INSTALLATION: Supply and install brick edge to locations as shown on plan and as approved on site by the Superintendent.

MAINTENANCE / PLANT ESTABLISHMENT

Maintenance shall apply to all hard and soft landscape materials installed prior to the "handover" and acceptance by Principles Representative and the Site Superintendent. The maintenance period shall commence at the granting of practical completion and shall extend for 26 weeks.

- Maintenance shall consist of the following works:
 - Follow a daily watering programme to be approved by Superintendent. Water all plants individually, twice per week or when necessary to ensure constant plant growth. Water all turf and native grassed areas, twice per week.
 - Apply appropriate weed control sprays and hand weed as required to maintain planting areas, native grassing bed areas, turfed areas, paved areas, and tree pits in turf free of weed or rogue grass growth.
 - Regularly tidy and top up mulch and trim edges to prevent spill over onto paved / grassed areas.
 - Spray to control pests and diseases.
 - Replace plants, which fail with plants of a similar size and quality as originally specified to approval of Superintendent. Costs of replacement shall be the responsibility of the Contractor. Replacement planting will be undertaken within 2 weeks of identification of dead material or instruction be the Superintendent.
 - Report any incidence of plants stolen or destroyed by vandalism.
 - Adjust stakes and ties to plants as necessary. Ensure that strangulation of plants does not occur.
 - Prune and shape plants as directed or where necessary.
 - Make good any defects or faults arising out of defective workmanship or materials.
 - Fertilise lawn areas to maintain healthy growth.
 - Make good any erosion or soil subsidence, which may occur including soft areas in pathways.
 - Mow lawn to maintain neat healthy growth.
 - A final inspection shall be made by the Superintendent before handover. Any items requiring rectification shall be repaired before the works are finally approved, and retention moneys released.

NOTE:

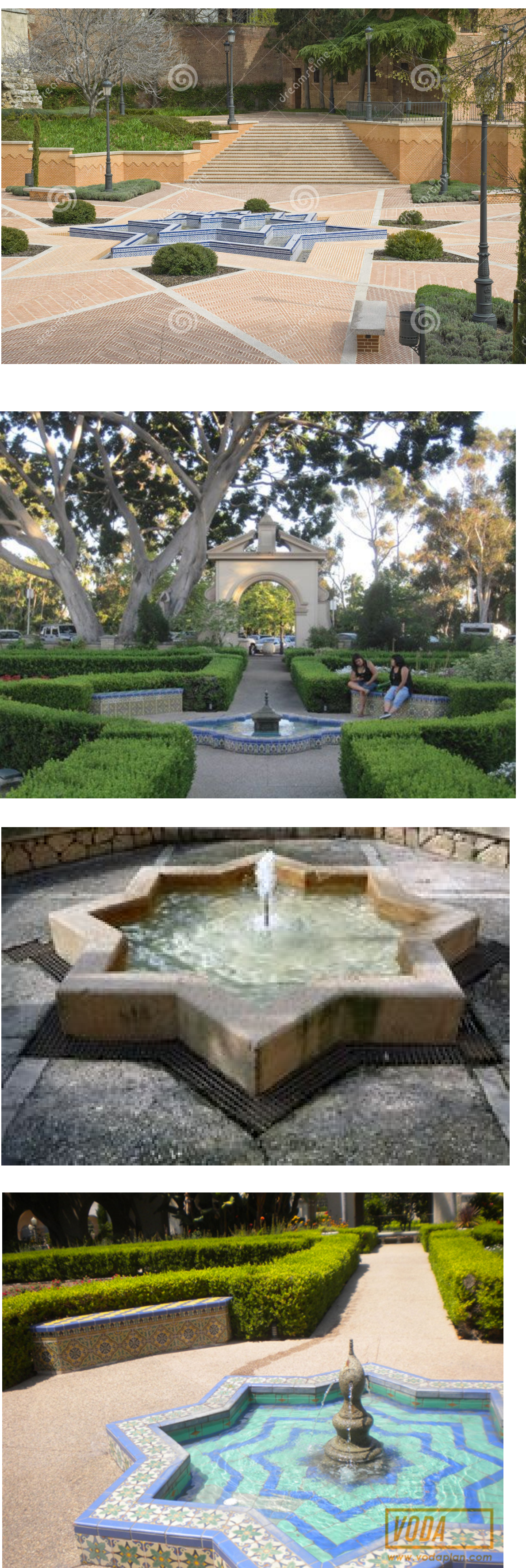
- All finished levels are to be verified by Contractor on site.
- All landscape works be in strict accordance with Council's landscape code and guidelines
- This plan to be used in conjunction with all other submitted architectural, hydraulics and engineering drawing where applicable.

<div>GENERAL NOTES:</div> <div><div>1. Do not scale of drawings. Follow written dimensions. If in doubt obtain written advice from the Superintendent.</div><div>2. Verify all dimensions on site.</div><div>3. Refer to legend for all symbol and code keys.</div><div>4. Read in conjunction with the specifications</div><div>5. Read in conjunction with all associated drawings</div></div>					DESIGNED:	PREPARED FOR:	<div>LANDSCAPE ARCHITECTS:</div> <div><div></div><div>GREENLAND DESIGN Pty Ltd</div><div>ABN 73 139 152 855</div><div>Landscape Architect: C. Ly I AILA</div><div>Mob.: 0403 164 198</div></div>	PROJECT:	DRAWING TITLE:	DATE:		
					GD	<div>AL MABARAT BENEVOLENT SOCIETY LTD</div>		<div>PROPOSED ARRAHMAN COLLEGE</div>	<div>Landscape Details & Specification</div>	<div>APRIL 2016</div>		
					DRAWN:						SCALE: varies	ISSUE:
					CL						FULL SIZE: A1	A
	A	FOR APPROVAL	CL	05.04.16				PROJECT ADDRESS:		DRAWING NO:		
	ISSUE	AMENDMENT	DRAWN	DATE				LOT 95-105, 17TH AVENUE AUSTRAL		1330.L.06		

Avenue Date Palm Plantings



Water Feature and Pavement



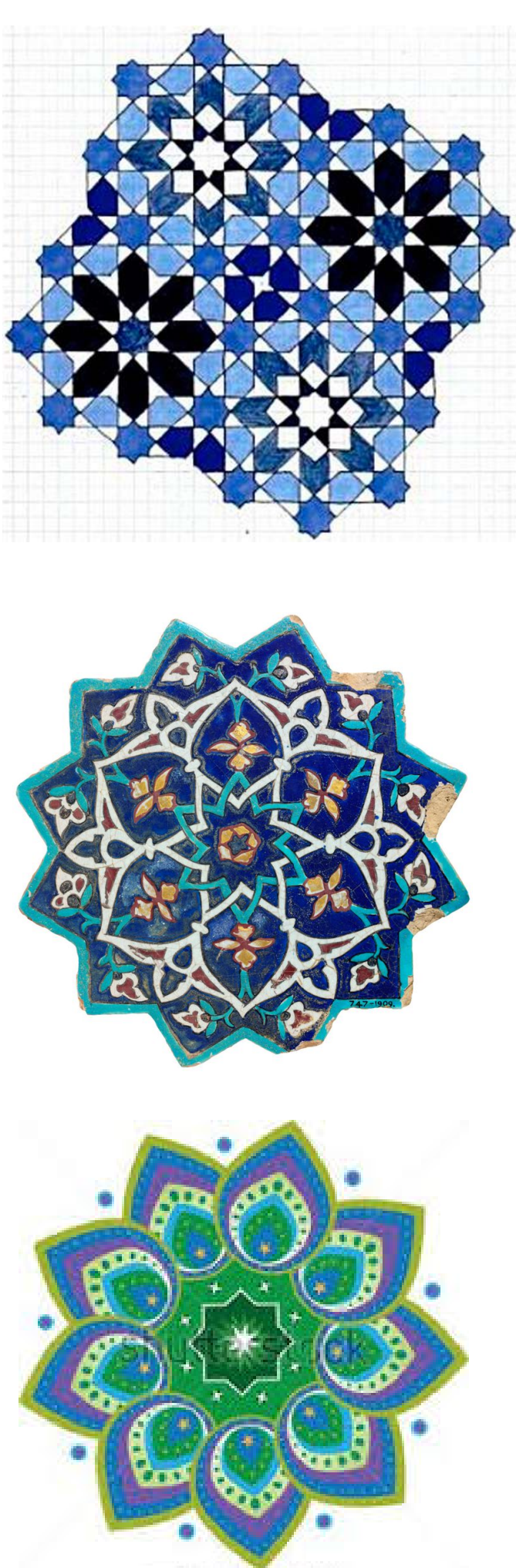
Feature Garden Art / Vertical Hedge



Sitting Steps




Art Pavement in Grass



GENERAL NOTES:
1. Do not scale of drawings. Follow written dimensions. If in doubt obtain written advice from the Superintendent.
2. Verify all dimensions on site.
3. Refer to legend for all symbol and code keys.
4. Read in conjunction with the specifications
5. Read in conjunction with all associated drawings

A	FOR APPROVAL	CL	05.04.16	DESIGNED: GD	PREPARED FOR: AL MABARAT BENEVOLENT SOCIETY LTD
ISSUE	AMENDMENT	DRAWN	DATE	DRAWN: CL	

LANDSCAPE ARCHITECTS:

GREENLAND DESIGN Pty Ltd
ABN 73 139 152 855
Landscape Architect: C. Ly I AILA
Mob.: 0403 164 198

PROJECT:
PROPOSED ARRACHMAN COLLEGE
PROJECT ADDRESS:
LOT 95-105, 17TH AVENUE AUSTRAL

DRAWING TITLE:
Precedence Images

DATE:
APRIL 2016
SCALE: varies
FULL SIZE: A1
DRAWING NO:
1330.L.07

ISSUE:
A